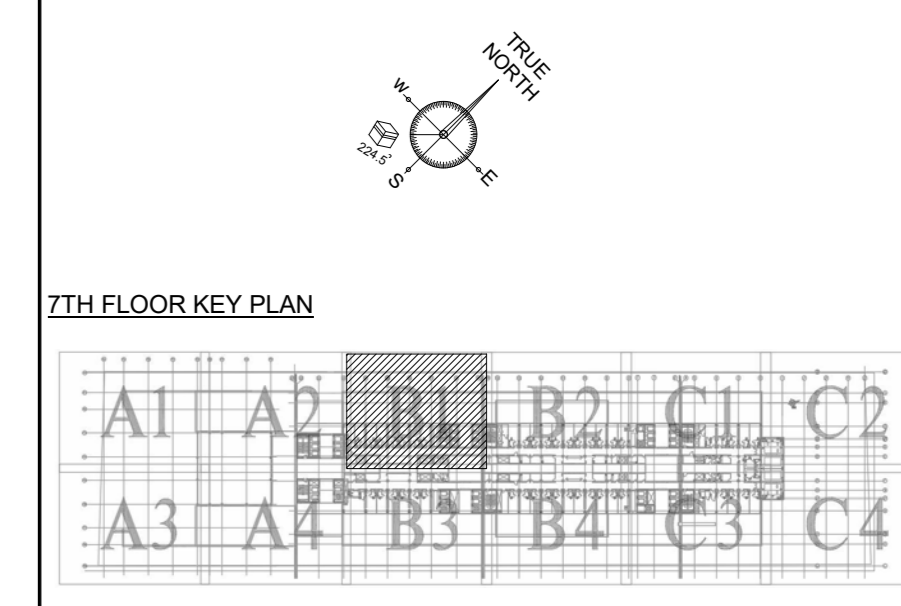


OWNER & ARCHITECTURE CONSULTANT:
 د. سليمان العبيد
 DR. SULAIMAN AL HABIB
 medical group



NOTES:
 1. ALL DIMENSIONS ARE IN MILLIMETERS.
 2. ALL FIRE PROTECTION PIPES SHOWN DIAMETER ARE NOMINAL DIAMETER SIZE.
 3. ALL PIPE LEVELS ARE FROM CENTER OF PIPE (COP).
 4. ALL PENDENT SPRINKLERS IN CEILING AREAS ARE CONCEALED PENDENT SPRINKLERS.
 5. FOR PIPE SUPPORT DETAILS SEPARATE DRAWING WILL BE SUBMITTED LATER.
 6. BUILDERS WORK WILL BE SUBMITTED SEPARATELY.

LEGENDS & ABBREVIATIONS:

—	FIRE PIPE
•	QUICK RESPONSE SPRINKLER
⊙	UP-RIGHT SPRINKLER
○	PENDENT SPRINKLER
⊗	PENDANT & UP-RIGHT SPRINKLER
⊕	PENDANT & UP-RIGHT SPRINKLER 79° C
◁	SIDE WALL SPRINKLER
—	ZONE LINE
FHC-1	FIRE HOSE CABINET WITH L.V.
FHC-2	FIRE HOSE CABINET WITHOUT L.V.
ZCS	ZONE CONTROL STATION
⊕	6 KG DRY POWDER EXTINGUISHER
⊕	25KG TROLLEY TYPE FIRE EXTINGUISHER
⊕	FIRE HYDRANT
⊕	FIRE BRIGADE BREECING INLET
⊕	RISER ON STACK
FH	FIRE HYDRANT
FP	FIRE MAIN PIPE
F.B.I.	FIRE BRIGADE BREECING INLET
A.A.V	AUTOMATIC AIR VENT
C.V	CHECK VALVE
L.V	LANDING VALVE
T/A	TO ABOVE
T/B	TO BELOW
F/A	FROM ABOVE
F/B	FROM BELOW
HL	HIGH LEVEL
B/G	BELOW GROUND
F/HL	FROM HIGH LEVEL
I.C.V	ISOLATION CONTROL VALVE
G.V	GATE VALVE
CL	CENTER LEVEL
DN	DOWN
---	WILL BE SUBMITTED WITH OTHER ZONE
---	WILL BE SUBMITTED LATER

SHOP DRAWINGS SUBMITTAL STATUS

ENGINEER TRANSMITTAL REF.	APPROVED	APPROVED AND NOTED	REJECTED
A			
B			
C			

REVISION STATUS

REV.	DATE	DESCRIPTION	SAC

BUILDING NAME:
GARB JEDDAH HOSPITAL

OWNER & ARCHITECTURE CONSULTANT:
 د. سليمان العبيد
 DR. SULAIMAN AL HABIB
 medical group

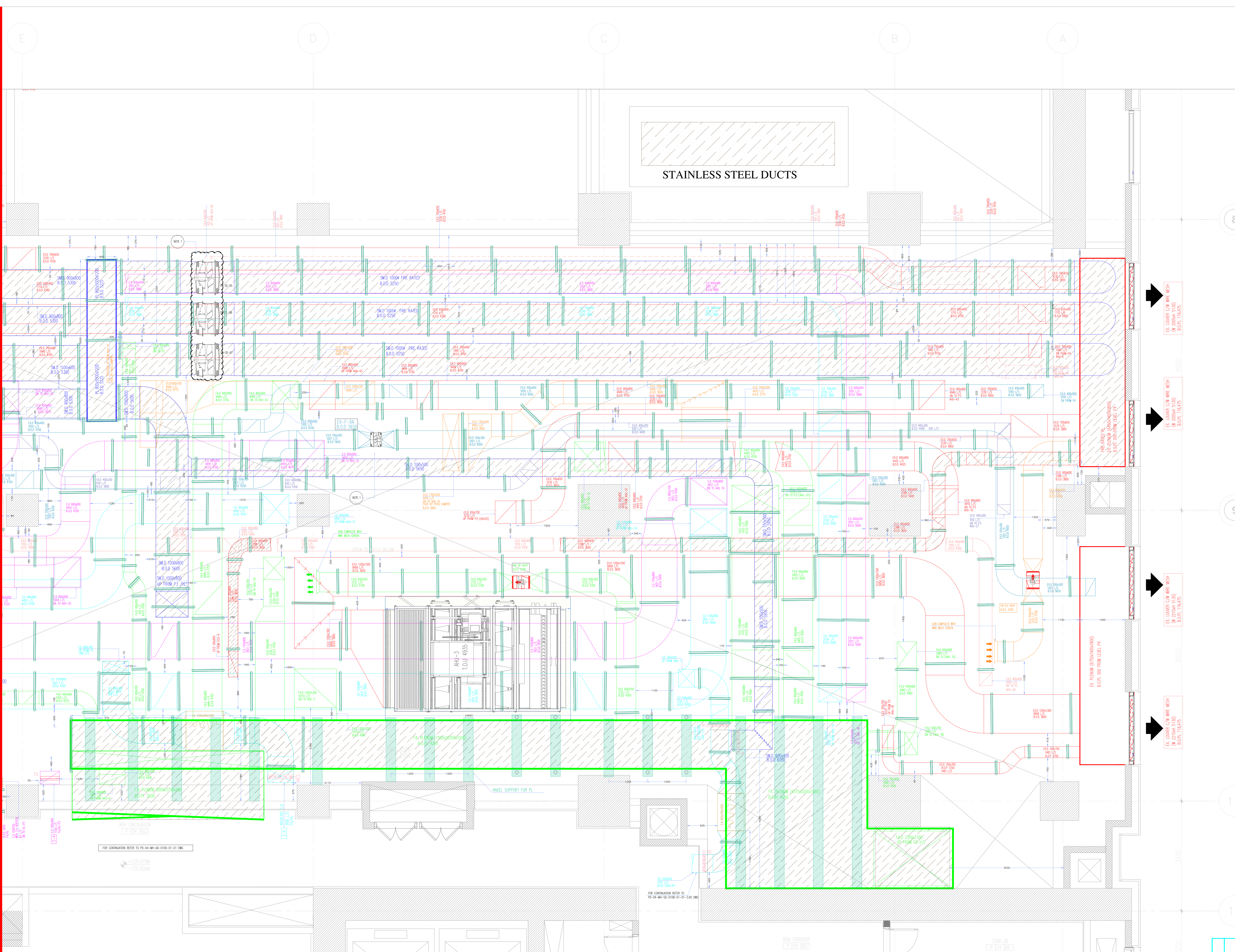
MEP DESIGNER:
SHAKER CONSULTANCY GROUP
 Technical Consultants and Engineers
 P.O. Box 28024 Jeddah 21511 Saudi Arabia
 Tel: (00966) 2802 4800 / 2802 4801 Fax: (00966) 2802 4808
 www.shakergroup.com

MEP CONTRACTOR:
Saudi Aircon
 MEP CONTRACTOR
 P.O. Box 24110 Jeddah 21511 Saudi Arabia
 Tel: (00966) 2411 1100 / 2411 1101 Fax: (00966) 2411 4102
 www.saudi-aircon.com

DRAWING TITLE:
**FIRE FIGHTING SYSTEM PART(4)
 4TH FLOOR**

DRAWN BY: Author DATE: 11/04/21 CHECKED: Checker
 SCALE: 1:100 FORNAT: A3 APPROVED: Approved
 PROJECT NO. ISSUER: CONTRACT REF. SHEET: REV

FOR CONTINUATION REFER TO (P0-03-MR-0608-01-01) DWG.



STAINLESS STEEL DUCTS

- NOTES**
- 1- ALL DIMENSIONS ARE IN MILLIMETERS UNLESS OTHERWISE NOTED.
 - 2- READ THIS DRAWING IN CONJUNCTION WITH STRUCTURAL AND ARCHITECTURAL DRAWINGS.
 - 3- FOR DUCT INSULATION SCHEDULE REFER TO GENERAL DETAILS DWG NO. 00-00-MH-SD-0100-01-01-1.00
 - 4- THIS LAYOUT IS ALREADY COORDINATED WITH OTHER TRADES.
 - 5- FOR DUCT SUPPORT SCHEDULE REFER TO GENERAL DETAILS DWG NO. 00-00-MH-SD-0100-01-01-1.00
 - 6- FOR PIPES SUPPORT SCHEDULE REFER TO GENERAL DETAILS DWG NO. 00-00-MH-SD-0100-01-01-1.00
 - 7- ALL BOTTOM OF PIPES (B.O.P) IS THE DISTANCE FROM THE BOTTOM OF PIPES TO FINISH FLOOR.
 - 8- ALL BOTTOM OF DUCT (B.O.D) IS THE DISTANCE FROM THE BOTTOM OF DUCTS TO FINISH FLOOR.
 - 9- ALL UNITS ARE IN INTERNATIONAL SYSTEM UNITS (SI) UNLESS OTHERWISE NOTED.
 - 10- CONTRACTOR WILL PROVIDE FULLY DETAILED CALCULATION TO SUPPORT THE HVAC INSTALLATION, WILL BE PROVIDED FOR THE CONSULTANT APPROVAL. ANY AMENDMENTS TO THE SYSTEM REQUIRED BY THIS LATE APPROVAL OF CALCULATION WILL BE AT THE CONTRACTOR RESPONSIBILITY.
 - 11- CONTRACTOR WILL PROVIDE FULLY DETAILED CALCULATIONS AND INSTALLATION TO SUPPORT SEISMIC LOADINGS FOR THE CONSULTANT APPROVAL. ANY AMENDMENTS TO THE SYSTEM REQUIRED BY THIS LATE APPROVAL OF CALCULATION AND INSTALLATION WILL BE AT CONTRACTOR RESPONSIBILITY.
 - 12- PIPE SIZE AND DUCT SIZE IN RISERS WILL BE VERIFIED ON SCHEMATIC DIAGRAMS SUBMISSION.
 - 13- ALL DUCT WORK SHOULD CONNECT TO GROUNDING SYSTEM AS PER SPECIFICATION.
 - 14- THE FIRE COMPARTS AND SHOCK DAMPING INSTALLATION DETAILS REFER TO DWG NO. 00-00-MH-SD-0100-01-01-1.00
 - 15- FOR PENETRATION DETAILS AND SLEEVES DETAILS, REFER TO DWG NO. 00-00-MH-SD-0100-01-01-1.00
 - 16- ALL DUCTS WILL BE COULDED.
 - 17- THIS DRAWING MUST BE COORDINATED WITH OTHER MEP SYSTEM (THE FIRE FIGHTING, PUBLIC HEALTH, ELECTRICAL AND COMPOSITE DRAWING WILL SUBMIT IN SEPARATE DRAWING).
 - 18- THE HEADUP DETAILS REFER TO DRAWING NO. 00-00-MH-SD-0100-01-01-1.00
 - 19- THE AIR INSTALLATION DETAILS REFER TO DRAWING NO. 00-00-MH-SD-1000-01-01
 - 20- THE CONNECTION BETWEEN COULDED AIR HAND DUCT AND CONDENSATE PIPE INSULATION AND CLADDING FOR DUCT AND PIPE REFER TO DRAWING NO. 00-00-MH-SD-0100-01-01-1.00

- APPROVED MATERIALS LIST**
- 1- DUCT (018-001-001-001)
 - 2- DUCT (018-001-001-002)
 - 3- FLEXIBLE DUCT (018-001-001-003)
 - 4- FLEXIBLE DUCT CONNECTOR - CHANNEL (018-001-001-004)
 - 5- DUCT JOINT AND ACCESSORIES (018-001-001-005)
 - 6- FLEXIBLE CONNECTOR (018-001-001-006)
 - 7- BLACK STEEL DOW PIPES (018-001-001-007)
 - 8- DOW PIPES (018-001-001-008)
 - 9- DOW PIPE INSULATION MATERIAL (018-001-001-009)
 - 10- CONDENSATE PIPES & FITTINGS (018-001-001-010)
 - 11- THREADS AND NUTS (018-001-001-011)
 - 12- PIPE FITTING TAPPED PIPE (018-001-001-012)
 - 13- SUPPORTING SYSTEM ACCESSORIES FOR MEP (As per spec)
 - 14- SUPPORTING SYSTEM ACCESSORIES (018-001-001-013)
 - 15- ACCESS DOORS (018-001-001-014)
 - 16- ROOFER WELLS (018-001-001-015)
 - 17- DUCT HANGARS (018-001-001-016)
 - 18- SUPER HANGARS (018-001-001-017)
 - 19- HANGARS - LOAD BEARING INSULATOR (018-001-001-018)
 - 20- AIR HANDLING UNIT (018-001-001-019)
 - 21- MECHANICAL ROOM (018-001-001-020)
 - 22- AIRWAY ACCESSORIES (018-001-001-021)
 - 23- AIRWAY ACCESSORIES (018-001-001-022)
 - 24- TRAC (018-001-001-023)
- FOR LEGEND AND ABBREVIATIONS SEE DWG. NO. (018-001-001-001-001)

1.00	ISSUED FOR APPROVAL	SA	BICHOY	12/10/2013
Rev.	Revision type	Drn.	Chk.	Date
STATUS :				DATE :
<input type="checkbox"/> (A) Approved With No Comments <input type="checkbox"/> (B) Approved with Minor Comments. Work May Proceed Subject to Incorporation of Changes Indicated <input type="checkbox"/> (C) Revise and Resubmit. Work May not Proceed <input type="checkbox"/> (D) Review not Required. Work May Proceed				SIGN :

Cont. Dwg Ref #	Rev.	REFERENCE CONTRACT DRAWING TITLE
SD_AB_PO_03_108	5.00	ARCHITECTURE - BLOCK WORK
SD_AB_PO_04_101	5.00	ARCHITECTURE - BLOCK WORK
CL_PO_05_502	4.00	STRUCTURAL-CONCRETE DIMENSIONS
SD_CL_PO_04_401	4.00	STRUCTURAL-CONCRETE DIMENSIONS
M2_0304_2074	1	IFC-HVAC-LEVEL 03-AREA 4
M2_0404_2084	1	IFC-HVAC-LEVEL 04-AREA 4

KEY PLAN:

01	02
03	04
05	06
07	08

PROJECT:
THE NILE CORNICHE PROJECT
CAIRO - EGYPT

CLIENT:
QATARI DIAR EGYPT
Real Estate and Tourism Investment Company, Egypt LLC.
205A, CORNICHE EL-NIL - NILE CITY, SOUTH TOWER, 11TH FLOOR, CAIRO, EGYPT

PROJECT MANAGER:
QATARI PROJECT MANAGEMENT (QPM)

CONSULTANT:
MCA-HKS ENGINEER: **ARUP**

ENGINEERING OF RECORD STRUCTURE:
ARAB CONSULTING ENGINEERS
MOHAMMAD - BAKHOM
المهندسون الاستشاريون العرب
مصر - القاهرة

ENGINEERING OF RECORD MEP: ARCHITECT OF RECORD:
ARUP
القوة الاستشارية
مهندسون استشاريون
القوة الاستشارية
مهندسون استشاريون
القوة الاستشارية
مهندسون استشاريون

MAIN CONTRACTOR:
CONSOLIDATED CONTRACTORS GROUP
S.A.L. (offshore) 18, Westat Zeraa St., Dokki, Cairo, Egypt.

MEP CONTRACTOR:
Drake & Scull International PUBLIC COMPANY
Drake & Scull International PUBLIC COMPANY
87 Choueib St. (El-Dokki) - Dokki, Cairo, Egypt
Tel: +202 2747 4830 Fax: +202 2747 4830

DRAWN BY	CHECKED BY	REVIEWED BY	APPROVED BY
SE&ADHAM	BICHOY	AMJAD	HASSAN

DESCRIPTION:
MECHANICAL
PODIUM-LEVEL 384 - AREA (4&6)
AHU'S MECH ROOM PART (7/8)
DUCTING HIGH LEVELS

CAD FILE NAME	PAPER SIZE	DATE	FLOOR	SCALE
P0-03-MR-SD-0607-01-01-1.00	A0	12/10/2013	03	1:40

PROJ. NO.	ORIGINATOR	AREA	SUBAREA	DISC.	DRAWING TYPE	SCALE	SH.NO.	SH.REV.
1018 - DS1	P0	03	MR	SD	0607	01	01	1.00

COORDINATION STATUS	CHECKED BY	DATE
MEP		
STRUCT.		
ELECTR.		